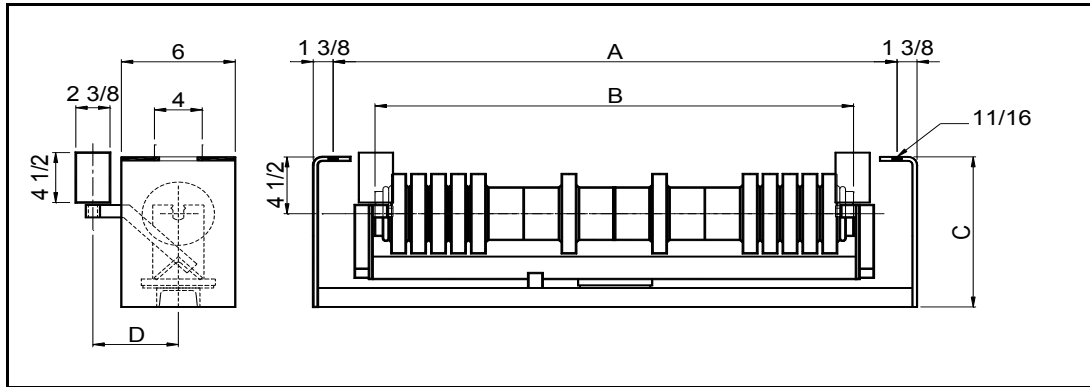




FLAT RUBBER DISC RETURN SELF ALIGNING IDLER



5" RUBBER DISC ROLL

BELT WIDTH	IDLER PART NUMBER	ROLL PART NUMBER	A	B	C	D	IDLER WEIGHT	ROLL WEIGHT	ROLL ROTATING WEIGHT	SHAFT Ø	BRG TYPE
24	MD5-2400-RETSA-RD	MD-DR-5-24	33	27 1/8	12 4/9	6	89	28	20	1-1/4* - 1	6305
30	MD5-3000-RETSA-RD	MD-DR-5-30	39	33 1/8	12 5/8	6	103	33	23	1-1/4* - 1	6305
36	MD5-3600-RETSA-RD	MD-DR-5-36	45	39 1/8	12 5/8	8	118	38	27	1-1/4* - 1	6305
42	MD5-4200-RETSA-RD	MD-DR-5-42	51	45 1/8	12 7/8	8	131	43	30	1-1/4* - 1	6305
48	MD5-4800-RETSA-RD	MD-DR-5-48	57	51 1/8	12 15/16	8	143	48	33	1-1/4* - 1	6305
54	MD5-5400-RETSA-RD	MD-DR-5-54	63	57 1/8	12 15/16	8	159	53	36	1-1/4* - 1	6305
60	MD5-6000-RETSA-RD	MD-DR-5-60	69	63 1/8	12 15/16	8	168	58	39	1-1/4* - 1	6305
66	MD5-6600-RETSA-RD	MD-DR-5-66	75	69	12 15/16	8	173	62	42	1-1/4* - 1	6305
72	MD5-7200-RETSA-RD	MD-DR-5-72	81	75 1/8	12 15/16	8	187	68	45	1-1/4* - 1	6305
78	MD5-7800-RETSA-RD	MD-DR-5-78	87	81 1/8	12 15/16	8	192	73	48	1-1/4* - 1	6305

6" RUBBER DISC ROLL

BELT WIDTH	IDLER PART NUMBER	ROLL PART NUMBER	A	B	C	D	IDLER WEIGHT	ROLL WEIGHT	ROLL ROTATING WEIGHT	SHAFT Ø	BRG TYPE
24	MD6-2400-RETSA-RD	MD-DR-6-24	33	27 1/8	12 4/9	6	92	31	22	1-1/4* - 1	6305
30	MD6-3000-RETSA-RD	MD-DR-6-30	39	33 1/8	12 5/8	6	106	36	26	1-1/4* - 1	6305
36	MD6-3600-RETSA-RD	MD-DR-6-36	45	39 1/8	12 5/8	8	122	43	31	1-1/4* - 1	6305
42	MD6-4200-RETSA-RD	MD-DR-6-42	51	45 1/8	12 7/8	8	142	53	40	1-1/4* - 1	6305
48	MD6-4800-RETSA-RD	MD-DR-6-48	57	51 1/8	12 15/16	8	164	69	54	1-1/4* - 1	6305
54	MD6-5400-RETSA-RD	MD-DR-6-54	63	57 1/8	12 15/16	8	178	73	56	1-1/4* - 1	6305
60	MD6-6000-RETSA-RD	MD-DR-6-60	69	63 1/8	12 15/16	8	302	81	62	1-1/4* - 1	6305
66	MD6-6600-RETSA-RD	MD-DR-6-66	75	69	12 15/16	8	306	86	65	1-1/4* - 1	6305
72	MD6-7200-RETSA-RD	MD-DR-6-72	81	75 1/8	12 15/16	8	328	90	68	1-1/4* - 1	6305
78	MD6-7800-RETSA-RD	MD-DR-6-78	87	81 1/8	12 15/16	8	333	95	71	1-1/4* - 1	6305

NOTES :

1. Also available with 1-1/2" drop.
2. Also available with wide mounting centers = A + 6"
3. Dimensions in Inches, Weights in lbs
4. Note actual drop height will be approximately 5/8" smaller for correct tamer operation