



UNIT HANDLING



Rulmeca's world-renowned range of products sets the standard in the field of industrial logistics solutions. Comprising of rollers, drum motors, and 24v driven rollers, these products have been developed and refined over a number of years, and have proven to be both reliable and efficient across a wide range of industries. Successful implementation of solutions has met customer-specific requirements in the following industries:

- packaging and palletizing
- industrial automation
- food and beverage processing and warehousing
- distribution centers
- airport logistics
- postal and parcel handling

Rulmeca is one of the largest global manufacturers of rollers that are designed and manufactured to suite any type of conveyor and automated system.

Each product in Rulmeca's comprehensive range of rollers is manufactured with materials suitable for unique customer and industry requirements, hence ensuring optimum reliability and performance. Rulmeca's ability to effectively customise solutions is unmatched in the materials handling industry.

Goods conveying is a critical aspect of production, packaging and distribution of numerous large consumer products and industrial components. Rulmeca's exclusive use of premium quality and high reliability rollers allows for handling units in an efficient and inexpensive way, which ultimately contributes towards a lower cost of the finished product.

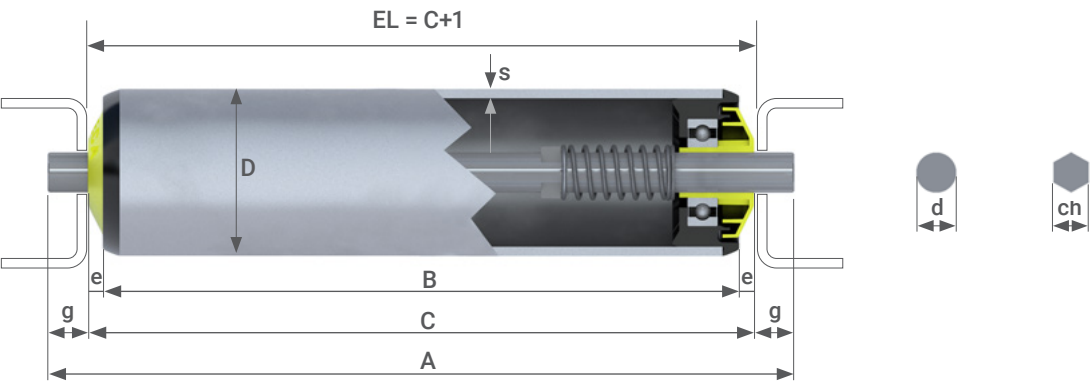
The outcome of Rulmeca's stringent and advanced design and production processes is a range of products guaranteed to deliver high performance, even under the harshest conditions.



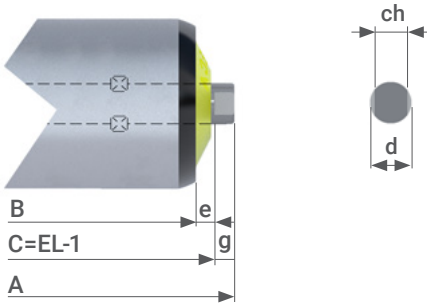
ROLLER SHAFT END EXECUTIONS

Rulmeca's unit handling rollers come in a range of shaft end executions, dependent on client requirements.

Execution D (Spring loaded)

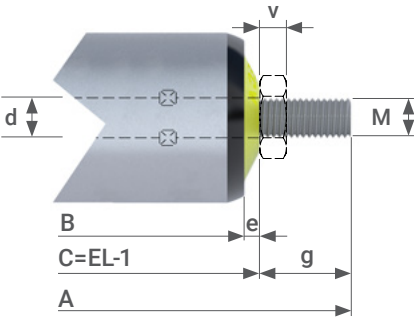


Execution F



d	10	12	14	17	17
ch	8	10	10	14	15
e	5	5	5	5	5
g	6	6	6	9	9

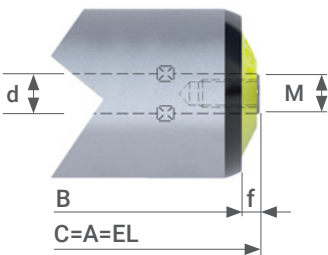
Execution M (Male thread)



d	8	10	12	14
ch	8	10	12	14
e	4,5	4,5	4,5	4,5
g*	20,5	21,5	27,5	31
v*	5,5	6,5	7,5	8,5

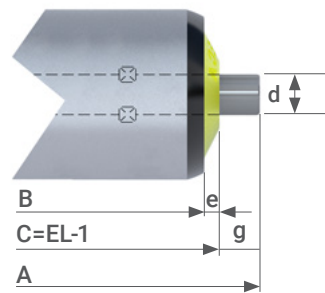
*values foreseen for half nuts UNI 5589

Execution R (Female thread)



d	10	12
ch	6x12	8x15
f	5	5

Execution S

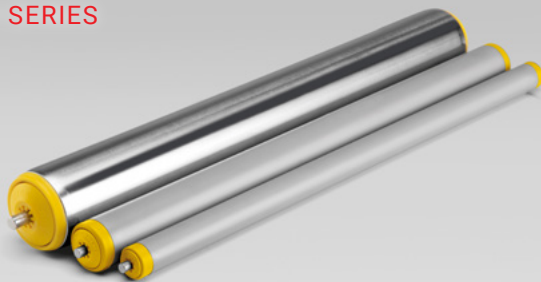


d	8	10	11	12	14	17
e	4,5	4,5	4,5	4,5	4,5	4,5
g	8	10	11	12	14	17

ROLLER CATALOGUE

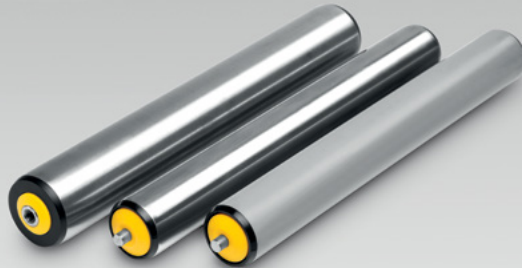
GRAVITY ROLLERS

111 SERIES



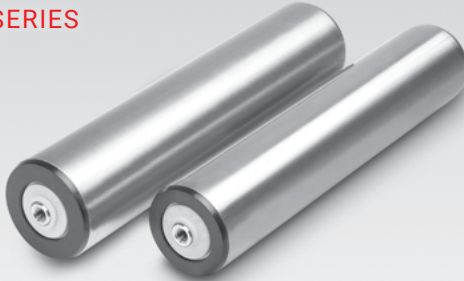
These rollers have their ideal application in light unit handling environments. Tubes are available as zinc plated, stainless steel, PVC and PVC sleeved. Roll diameters include Ø20/30/40/50 mm. Shaft diameters include Ø6/8/10/12 mm. Shaft executions include spring loaded, fixed shaft, female thread and male thread.

117 SERIES



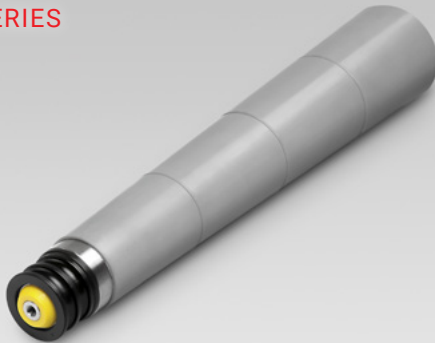
These rollers are very versatile, and available in anti-static, having various applications possibilities 6002-2RZ type. Tubes are available as zinc plated, stainless steel, PVC and PVC sleeved. Roll diameters include Ø40/50/60/63/80 mm. Shaft diameters include Ø8/10/12/14 & 11 mm hexagon. Shaft executions include spring loaded, fixed shaft, female thread and male thread.

119 SERIES



Idle smooth running rollers are ideal for heavy unit handling conveyors in normal internal environments. The permanently lubricated precision ball bearings 6205-2RZ are housed in black colour polyamide end caps and are protected by yellow colour polypropylene caps. These are the gravity driven version of the 119 series. Roll diameters include Ø80/89 mm. Shaft diameters include Ø20 mm.

KRO SERIES



Using series 117 rollers with Ø50 mm diameter tube. Ribbed truncated grey Polypropylene cone sleeves are fitted to the roller to achieve a cone shape. Rollers can be driven or non-driven. Driven options include pinion sprockets, simplex and duplex, poly V head, or round belt.

DRIVEN ROLLERS

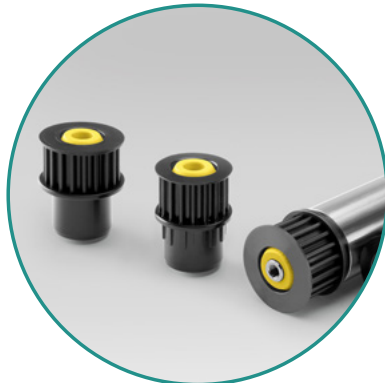
135/138 SERIES



135 The base of the roller is the same as the 117 series. Different options are used to drive these rollers: pinion sprockets, simplex and duplex, poly V, rounds belt or toothed belt. Rollers are positively driven.
138 Friction Rollers, used in accumulation type conveyors systems. Different options are used to drive these rollers: pinion sprockets, poly V, rounds belt and toothed belts. Tube and shaft options are the same as 117 series.



POLY V HEAD



TOOTHED BELT HEAD



SIMPLEX & DUPLEX PINION SPROCKETS



DOUBLE GROOVED HEAD

139 SERIES



Designed to carry pallets, these Rollers are driven by pinion sprockets, simplex and duplex. Tube is Ø80-89 mm. Shaft is Ø20 mm drilled and tapped for M12 bolts. Non driven options are available in the 119 series.

In addition to the standard specifications, Rulmeca can manufacture rollers that are tailor-made to satisfy the specific requirements of any customer's unit handling applications and environment.

INDUSTRIAL DRUM MOTOR RANGE (LS)

Drum Motor 80LS, 113LS, 138LS, 165LS, 216LS, 220M-H with steel helical gearbox

Rulmeca's range of LS drum motors, using a tested and proven steel helical gearbox, are the ideal solution for driving belt conveyors. Comprising of a motor, bearings and gearbox hermetically enclosed inside the casing, Rulmeca drum motors are partially filled with oil that acts as a lubricant and refrigerant, to dissipate away the heat through the shell and the belt conveyor. Rulmeca Drum motors have a 2 years' warranty.

- reduced energy consumption
- increased efficiency
- ease of installation
- space-saving design
- designed for the toughest conditions
- guaranteed for food safety
- maintenance-free

Applications Small feed conveyors with high-duty cycles | Packaging equipment | Dynamic weighing equipment | Metal detectors | Pharmaceutical handling | Food processing | Steel or plastic



modular belt applications | Dry, wet and wash-down applications | Small conveyors with high-duty cycles | Airport check-in conveyors | Conveyors with high-duty cycles | Transport conveyors | Logistics applications | Mobile conveyors | Airport and postal conveyors | Warehouse loading conveyors | Telescopic conveyors | Agricultural plants

Ideal for food

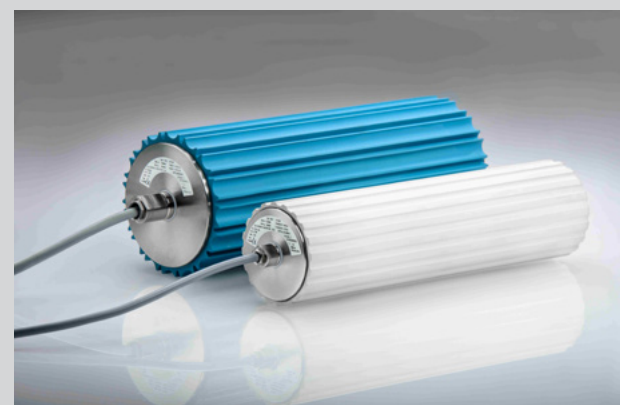
Thanks to its flat smooth surfaces, stainless steel finish and totally enclosed and hermetically sealed design, Rulmeca drum motors are easy to clean, which significantly reduces the risk of contamination in food processing environments.

Safety

With safety being a priority in the design of all Rulmeca's products, component parts are totally enclosed within the drum motor. With the external shafts secured within the conveyor frame, the only moving part is the body of the pulley running under the conveyor belt. Conveyors can be designed in such a way to prevent any of the drive pulleys being visible, resulting in an extremely safe method to drive conveyor belts.

Maintenance-free

The fully-sealed design ensures that internal parts are not exposed to external environmental conditions or tampering. As completely self-contained units, Rulmeca's drum motors require no maintenance throughout their service lifetime.

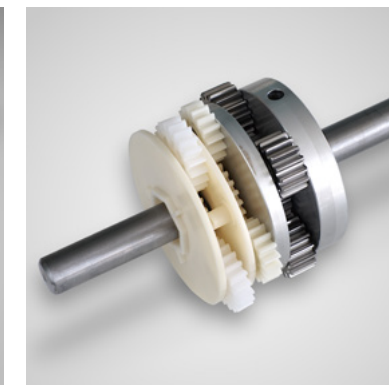


LIGHT INDUSTRIAL DRUM MOTOR RANGE (LP)

Drum Motor 80LP, 113LP with planetary gearbox

Using a techno-polymer or combined techno-polymer/steel gearboxes, these drives are ideal for light loads. A combination of strength, reliability and zero maintenance, make these motorized pulleys perfect for small infeed conveyors, packaging equipment and transfer conveyors.

Applications Small light-duty conveyors | Cross belt feed conveyors | Light-duty packaging equipment | Food processing | Supermarket checkout conveyors | Dry, wet and wash-down applications



DRIVE ROLLERS

The latest generation of Rulmeca's 24 VDC Drive Roller technology

The new Drive Roller BL3 features a brushless motor installed in a 50 mm diameter able to drive adjacent rollers. Roller conveyors driven by Rulmeca Drive Roller technology do not need any external drive units, transmission chains or expensive guards for safe, silent and efficient operation. They enhance performance and reliability and are a smart state-of-the-art solution for a great variety of demanding industrial conveying applications while providing optimum control and handling.

The Rulmeca Drive Roller runs on 24VDC and is classified as being particularly safe. But it is also an extremely silent, compact, efficient, wear resistant and maintenance-free drive system.

This makes for a unique combination. The expanded range includes a series of new configurations, high speeds and torque. Rulmeca can offer an external electronic board and extension cables to make it easier to manage the Drive Roller in most applications. If needed, Rulmeca can also provide customized specifications which may address specific applications in systems or special machines.



LOCATIONS



Our global presence and local service

- MANUFACTURING, SALES, & SERVICE
- SALES & SERVICE

AUSTRALIA | CANADA | CHINA | DENMARK / SWEDEN | FINLAND | FRANCE | GERMANY | INDONESIA
ITALY | POLAND | SOUTH AFRICA | SPAIN / PORTUGAL | THAILAND | TURKEY | UNITED KINGDOM | USA



Germany



South Africa



Italy

CONTACT DETAILS

Melco Conveyor Equipment (Pty) Ltd
Cnr Hertzog & Jack Pienaar Streets, Germiston South
Ext 7, Germiston, Gauteng, South Africa
Tel +27 11 255 1600 / +27 87 285 5239
Email conveyors-za@rulmeca.com

Conveyor Pulley Manufacturers (Pty) Ltd
19 Bester Streets, Kruinhof,
Gauteng, South Africa
Tel +27 11 255 1600 / +27 87 285 5239
Email conveyors-za@rulmeca.com

Melco Conveyor Equipment Zambia (Pty) Ltd
House 21, Musasa Avenue, CEC Village,
Nkana East, Kitwe, Zambia
Tel +27 66 478 5492 / +260 960 130 863
+260 979 097 994

Rulmeca Melco Australia (Pty) Ltd
Brisbane/ Perth
Mob +61 467 666 067
Email conveyors-au@rulmeca.com

Rulmeca South America
Peru email conveyors-pe@rulmeca.com
Chile email conveyors-cl@rulmeca.com

www.melco.co.za

www.rulmeca.com